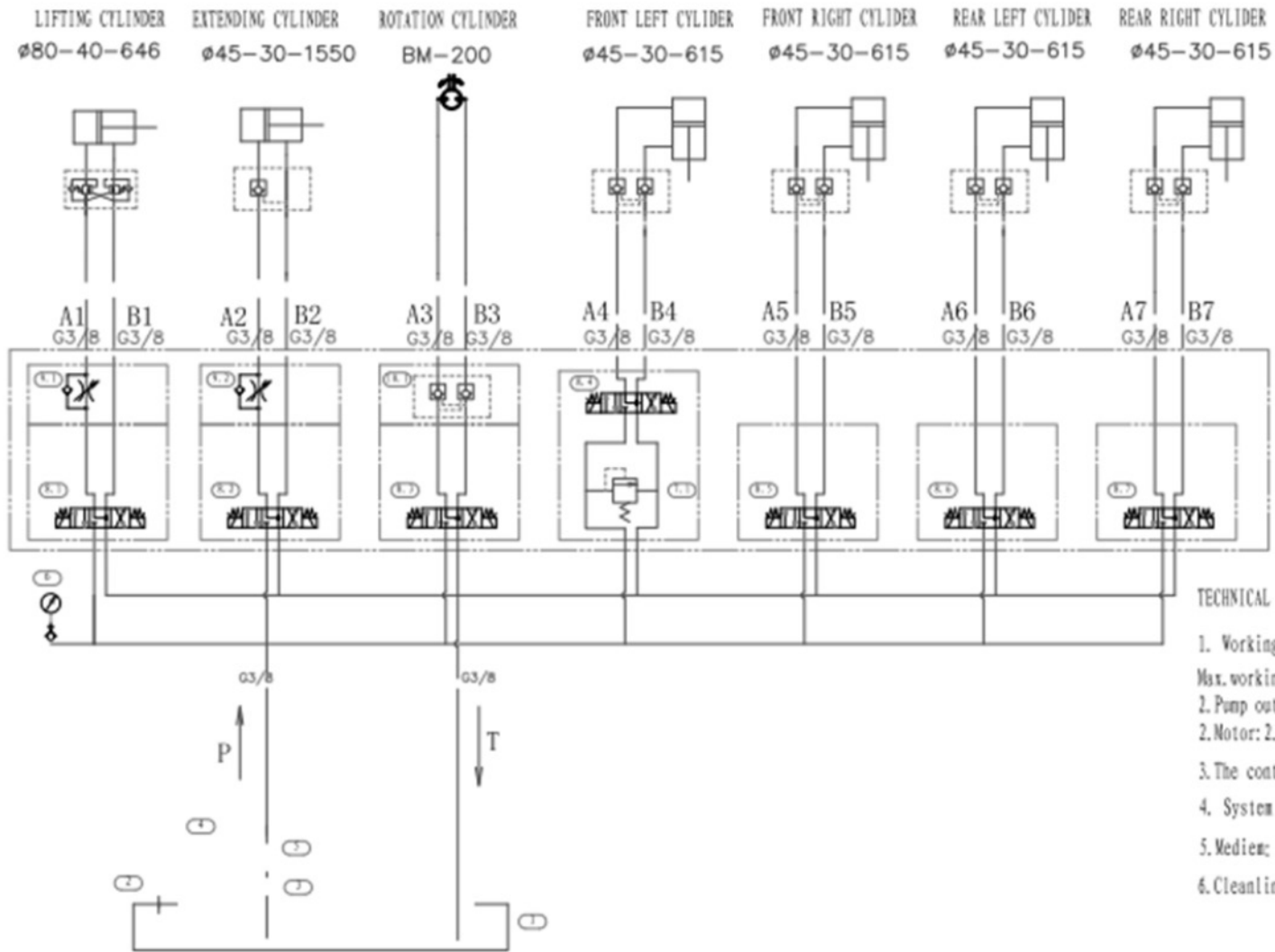


12HKP3000 Hydraulic Schematics



- TECHNICAL DATA:**
- Working pressure: 14MPa,
 - Max. working pressure: 16MPa
 - Pump output: 1.2ml/r;
 - Motor: 2.0KW, 2600r/min, DC12V;
 - The control voltage of solenoid valve: DC12V
 - System flow: 3.5L/min;
 - Medium: N46 anti-wear hydraulic oil ;
 - Cleanliness: NAS10